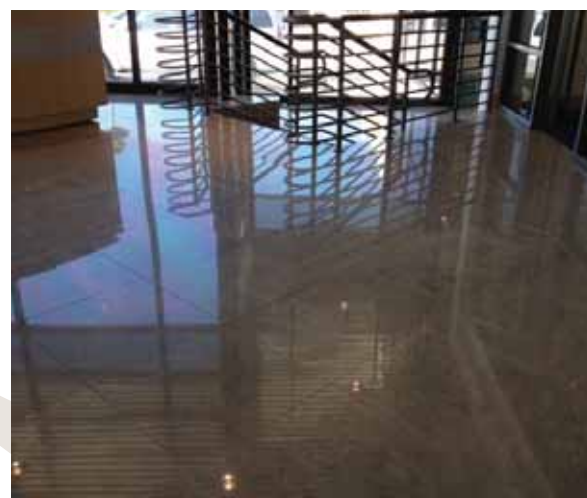


## TEC® Provides High-Performance Products For Upscale Renovation at Mercedes-Benz Dealership

Since its inception, Mercedes-Benz has maintained a reputation for high quality and durability – two attributes that have also become synonymous with TEC brand products. In early 2011, the two leaders in their respective industries converged during a high-end renovation of the Crown Mercedes-Benz dealership in St. Petersburg, Florida.



The first phase of renovating the 7,000 square-foot facility included installing new premium floor tile throughout two of its three showrooms. The specifications called for large format, 21" x 21" polished porcelain tiles, which were sourced from Crossville Tile. The tile contractor hired to execute the installation was Canto Tile & Stone of the Tampa Bay area.



Canto Tile & Stone worked with Tampa Tile Center to secure the products necessary for the installation. TEC's Ultimate Large Tile Mortar and its newest innovation, Power Grout™, were selected to ensure flawless results. TEC Ultimate Large Tile Mortar was chosen based on its no-slip, no-slump features and its superior mortar transfer to tile. In addition, Canto selected Power Grout to provide permanent stain protection, crack resistance and flawless color consistency.

**TEC Products Used:**  
– Power Grout™  
– Ultimate Large Tile Mortar

## CASE STUDY

**TEC**<sup>TM</sup>  
 Leading Innovation.  
 Exceeding Expectation.

**“The Power Grout was fantastic – the installers found it to be incredibly easy to work with. It polished up beautifully and the color consistency was impeccable”**

The General Contractor, Suncoast Auto Builders, removed the existing, 20-plus year-old black agglomerate marble. Then Canto Tile & Stone used the Ultimate Large Tile Mortar to prevent lippage, a problem caused by heavy, large format tile slumping into the mortar bed and creating unevenness throughout the installation. The single floor and wall formula of Power Grout also simplified the installation, allowing for a tight, 1/16" grout joint, and added to the seamless, striking look of the new floors.



“The Power Grout was fantastic – the installers found it to be incredibly easy to work with. It polished up beautifully and the color consistency was impeccable,” said Frank Canto, owner of Canto Tile & Stone and the recipient of the National Tile Contractors Association’s 2010 ‘Tile Person of the Year.’

“This was a high-end job, so we used high-end products that made for an efficient, effective and elegant tile installation. The new tile actually looks like a sheet of glass; it’s truly one of the most beautiful floors I’ve ever seen.”

The job was completed on schedule, and Crown Mercedes-Benz is thrilled with the renovated showrooms. The next phase of the project includes retiling the third showroom and will follow the same successful installation process using the same high-performance TEC products.

**For more information about Power Grout, Ultimate Large Tile Mortar or other TEC products, visit [www.tecspecialty.com](http://www.tecspecialty.com).**


#### About H.B. Fuller Construction Products Inc.

H.B. Fuller Construction Products (a subsidiary of H.B. Fuller Company) is a leading provider of technologically advanced solutions to the commercial, industrial and residential construction industry. Headquartered in Aurora, Illinois, the company's recognized and trusted brands - TEC®, CHAPCO®, Grout Boost®, Foster®, Dramatic Surface Products™, AIM™ and others – are available through an extensive network of distributors and dealers, as well as home improvement retailers. For more information, visit [www.hbfuller-cp.com](http://www.hbfuller-cp.com).

 **H.B. Fuller**  
 CONSTRUCTION PRODUCTS

1105 South Frontenac Street  
 Aurora, IL 60504-6451

©2011 H.B. Fuller Construction Products Inc.

MARKETING  SUPPORT INC.	Job #: HBFP	Revision: 0	Updates: je111711	<b>Printout Size</b> <b>100%</b> <small>This printout is for indicating color breaks only. Do not use for color matching. Do not measure for accuracy.</small>
File Name: 134872-CrownMercedes.ai		Time: 12P		
Printing & Finishing: 4/cProc-Offset	Size: 8.5" x 11"			
Colors: <b>CMYK DIE</b>				